



Rail Central

# Preliminary Environmental Information Report (PEIR): Stage 1

## PART 3

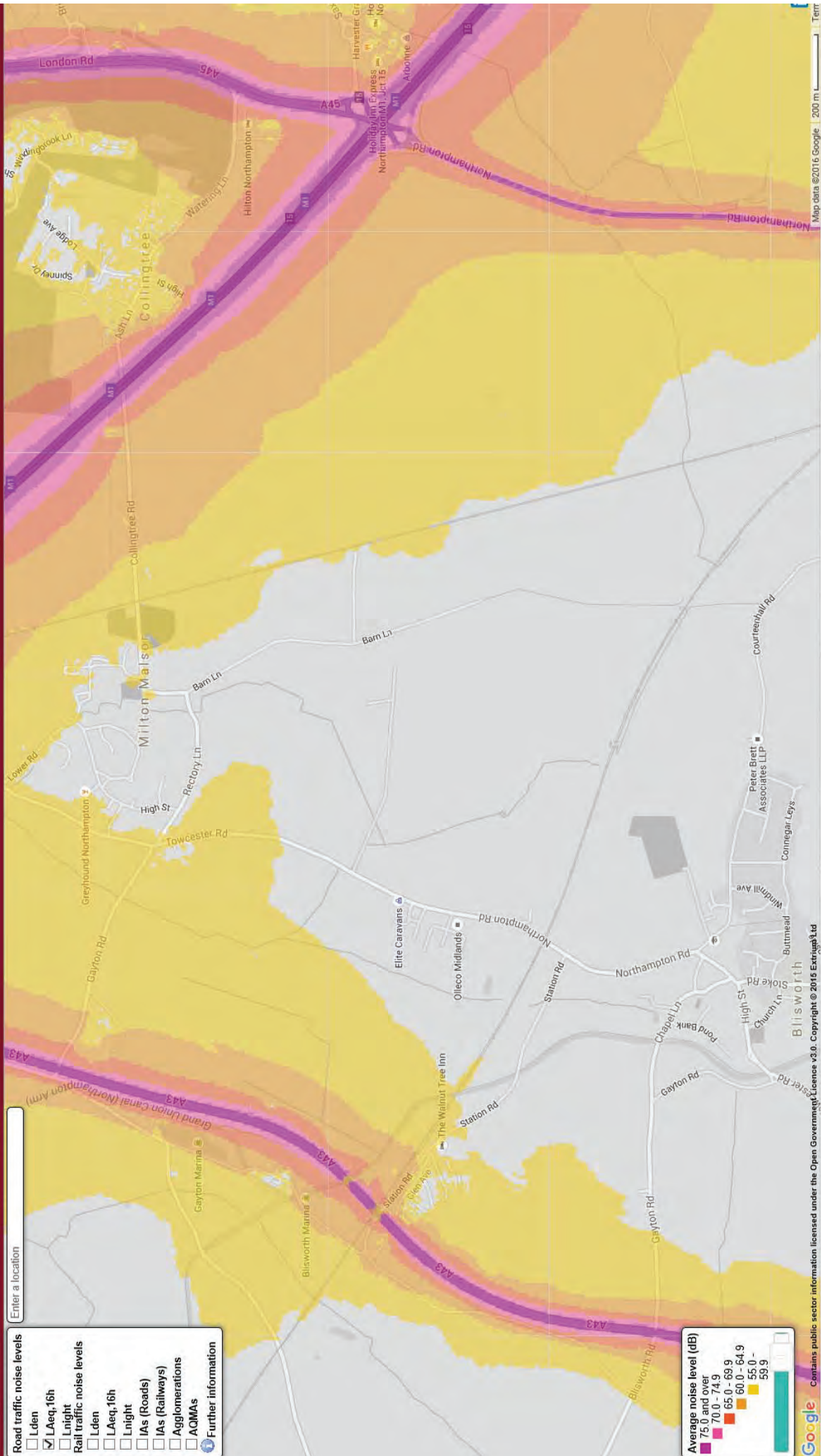
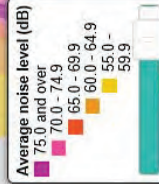
---

**Figure 18.3**

# England Noise Map Viewer

Enter a location

- Road traffic noise levels**
- Lden
  - LAeq,16h
  - Lnight
- Rail traffic noise levels**
- Lden
  - LAeq,16h
  - Lnight
  - IAs (Roads)
  - IAs (Railways)
  - Agglomerations
  - AQMAs
- [Further information](#)



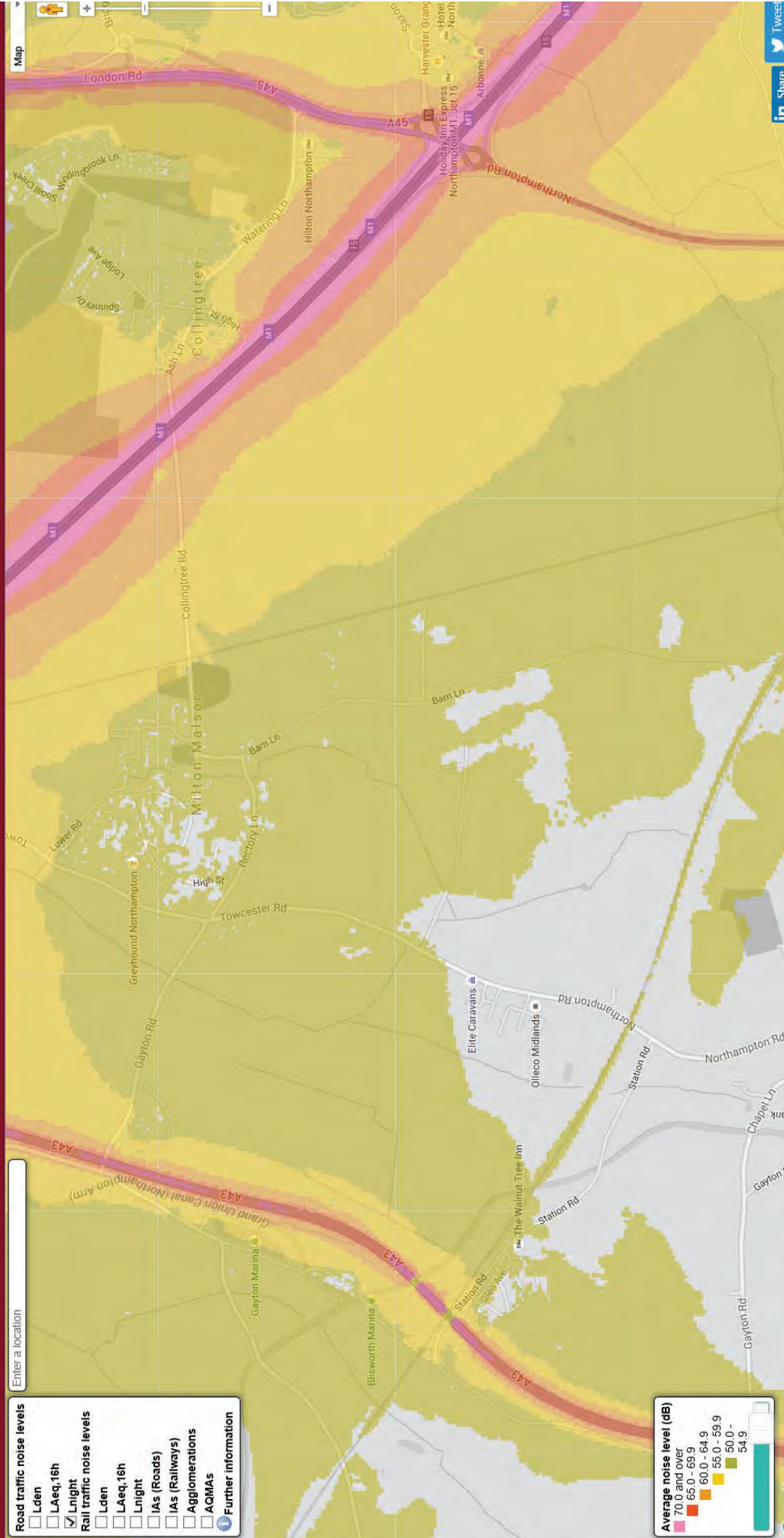


# England Noise Map Viewer

Extrim

Enter a location

- Road traffic noise levels**
- Lden
  - LAeq,16h
  - Lnlight
- Rail traffic noise levels**
- Lden
  - LAeq,16h
  - Lnlight
  - IAs (Roads)
  - IAs (Railways)
  - Agglomerations
  - AQMAs
- Further information**
- [Further information](#)



Map



Share



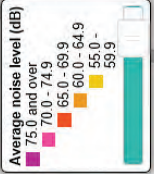
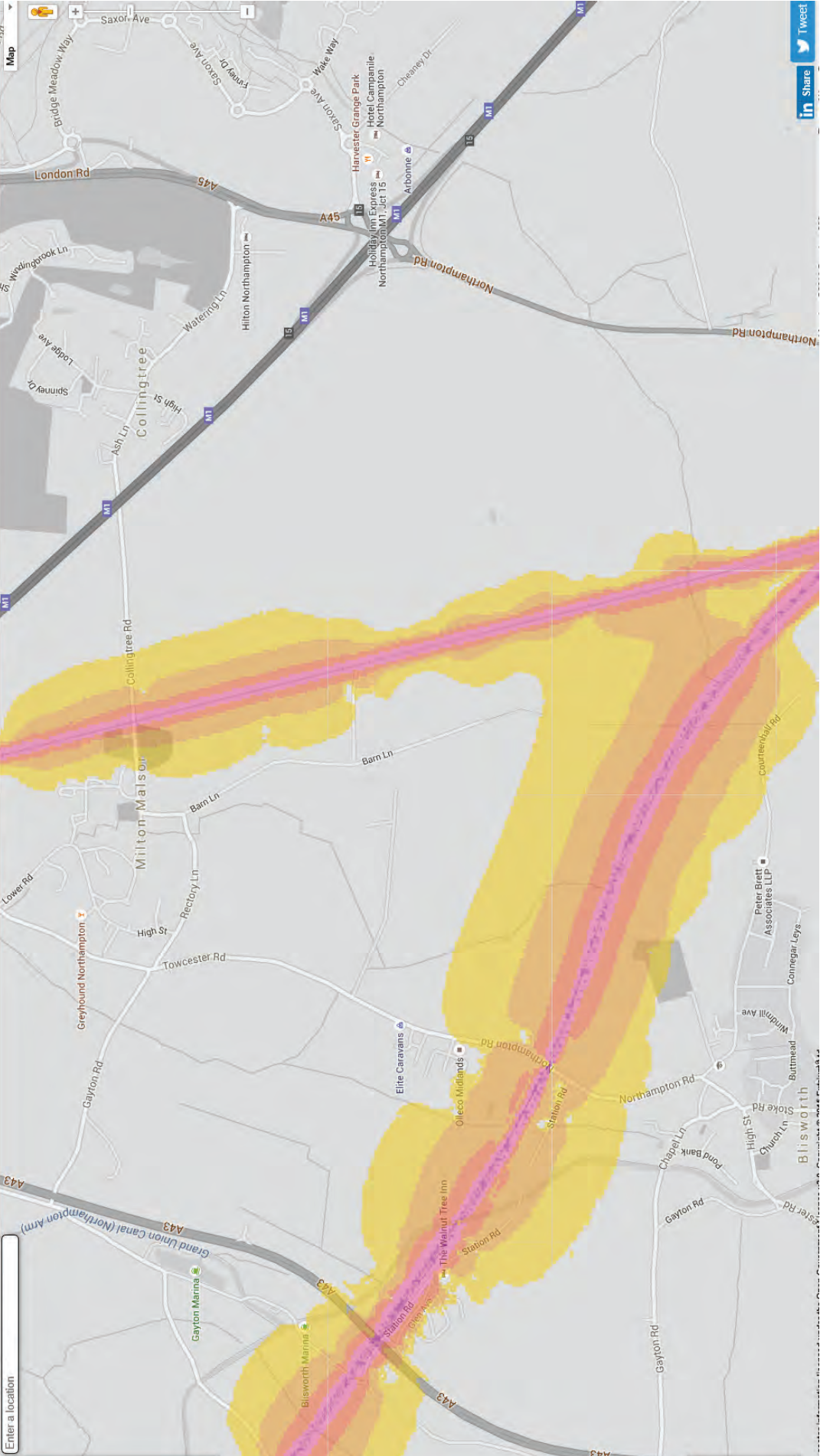
Tweet



# England Noise Map Viewer

Extrium

- Enter a location
- Map
- Road traffic noise levels
    - Lden
    - LAeq,16h
    - Lnight
  - Rail traffic noise levels
    - Lden
    - LAeq,16h
    - Lnight
    - IAs (Roads)
    - IAs (Railways)
    - Agglomerations
    - AQMAs
  - [Further information](#)



in Share

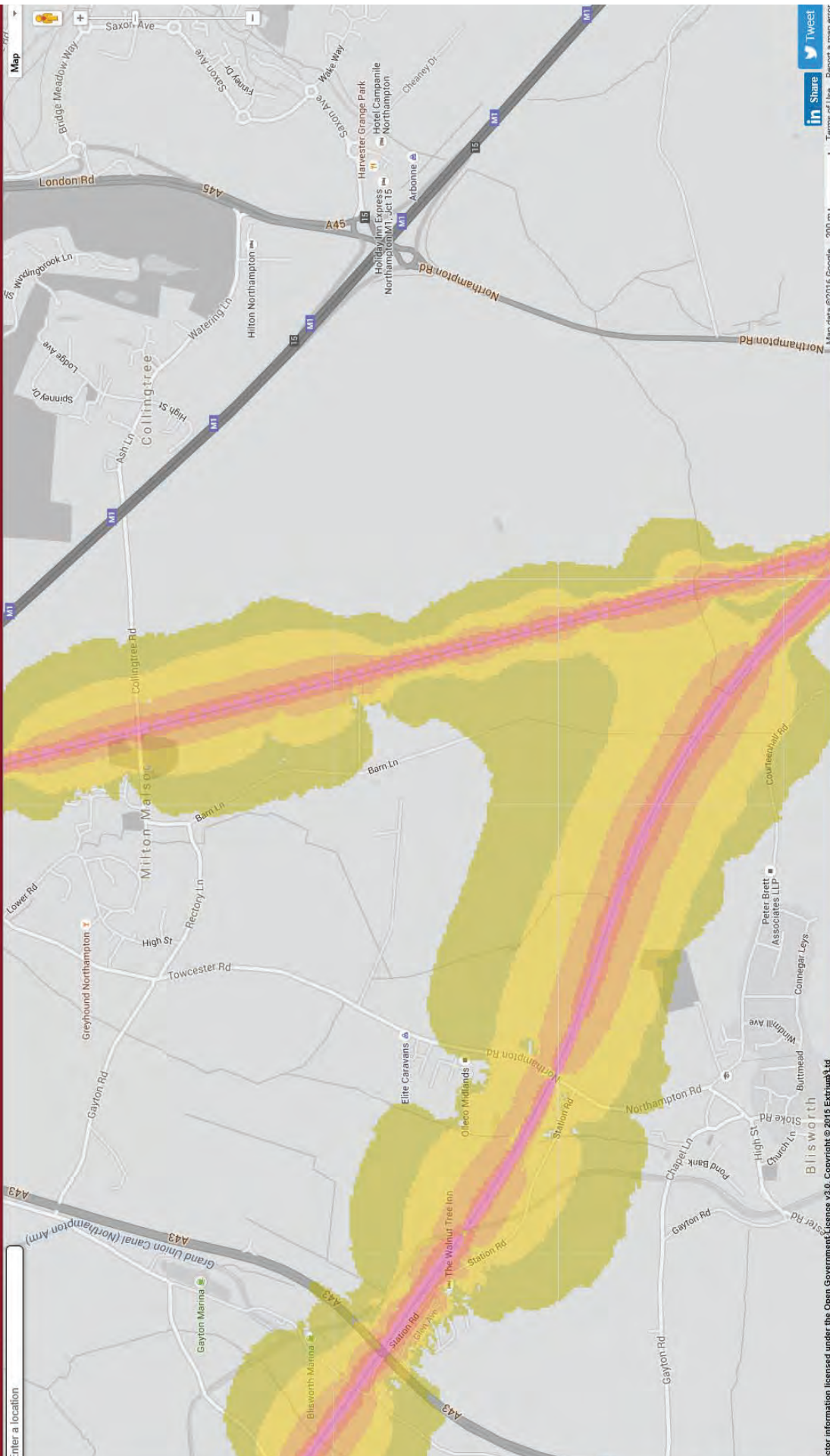
Tweet

Google

# England Noise Map Viewer

Extrim

- Enter a location
- Road traffic noise levels
    - Lden
    - LAeq,16h
    - Lnight
  - Rail traffic noise levels
    - Lden
    - LAeq,16h
    - Lnight
  - IAs (Roads)
  - IAs (Railways)
  - Agglomerations
  - AQIMAs
  - Further information



[in Share](#)
[Tweet](#)

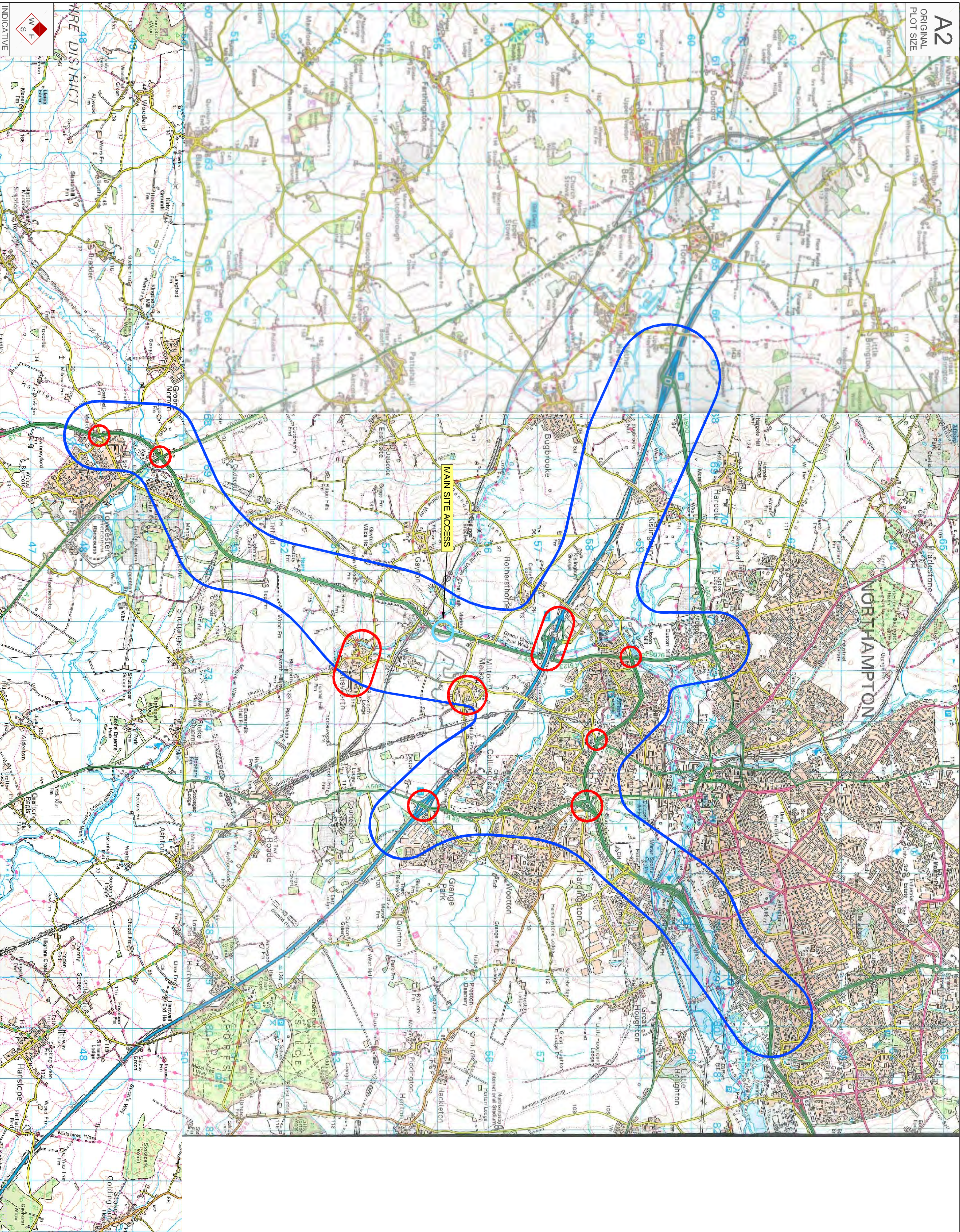
Map data ©2016 Google | 200 m

Terms of Use | Report a map error

---

**Figure 19.1**





Reproduced from Ordnance Survey Supermap Data with the permission of The Controller Her Majesty's Stationery Office, Crown Copyright - Licence No. AL100004231

KEY

- ▭ Potential Area Of Assessment
- Key Locations For Assessment

1:1	1:1	1:1	1:1
2:1	2:1	2:1	2:1
3:1	3:1	3:1	3:1
4:1	4:1	4:1	4:1
5:1	5:1	5:1	5:1
6:1	6:1	6:1	6:1
7:1	7:1	7:1	7:1
8:1	8:1	8:1	8:1
9:1	9:1	9:1	9:1
10:1	10:1	10:1	10:1
11:1	11:1	11:1	11:1
12:1	12:1	12:1	12:1
13:1	13:1	13:1	13:1
14:1	14:1	14:1	14:1
15:1	15:1	15:1	15:1
16:1	16:1	16:1	16:1
17:1	17:1	17:1	17:1
18:1	18:1	18:1	18:1
19:1	19:1	19:1	19:1
20:1	20:1	20:1	20:1

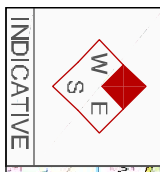
CLIENT:  
**ASHFIELD LAND LTD**

PROJECT:  
**RAIL CENTRAL**

TITLE:  
**Potential Area Of Assessment**

**INFORMATION**

STATUS:	DATE:	DRAWN:	CHECKED:	APPROVED:
NTS	08.04.16	PSW	AJS	JNT
JOB NO.:	DRAWING NO.:	REVISION:		
1211-80	Figure 19.1			



INDICATIVE

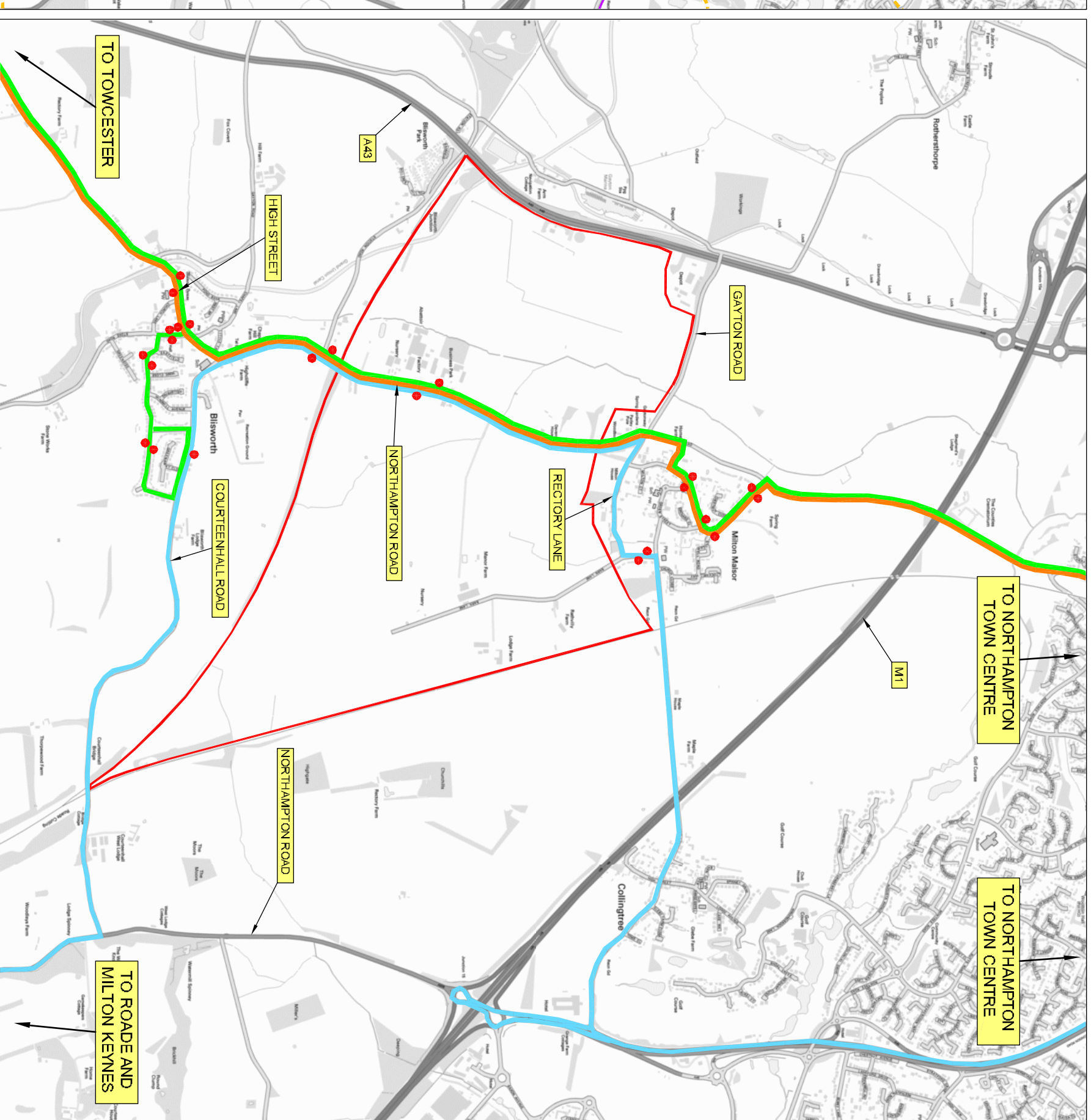
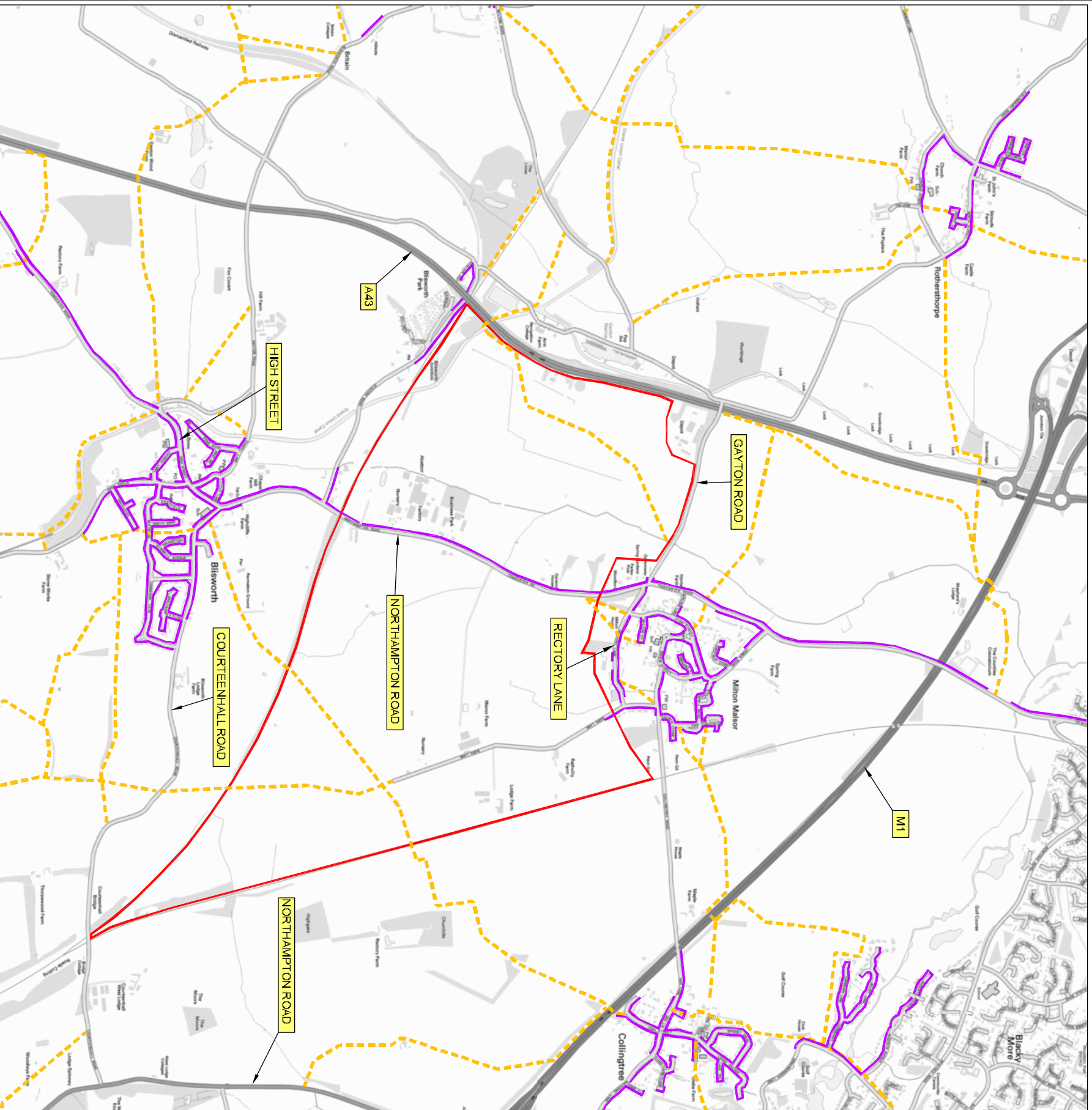


---

## Figure 19.2

KEY

- Approximate site boundary
- Public Rights Of Way
- Footways
- Bus route 8 - Wasston Fyall - Northampton - Towcester (- Brackley - Blisworth)
- Bus route 86 - Towcester - Roades - Northampton
- Bus route 89 - Northampton - Blisworth - Towcester - Deanshanger - Milton Keynes
- Bus Stops



Public Rights of Way and Footways

Bus Routes

TITLE  
Local Highway Network

CLIENT  
**ASHFIELD LAND LTD**

PROJECT  
**RAIL CENTRAL**

NO	DATE	SCALE	DATE	SCALE	DATE	SCALE
1	2016					

STATUS  
**INFORMATION**

SCALE	DATE	DRAWN	CHECKED	APPROVED
1:20,000	08.04.16	PSW	AJS	JNT
JOB NO:	1211-80	DRAWING NO:	Figure 19.2	REVISION:



INDICATIVE

RESERVED COPYRIGHT



---

**Figure 19.3**



TOWCESTER ROAD

TOVE ROUNDABOUT

A43

A43

A5

A5

EXISTING DITCH TRUNCATED AND REPLACED WITH FILTER DRAIN.

WIDENING WORKS ON A5 NORTHBOUND TO ACCOMMODATE EXTENDED 2 LANE APPROACH TO ROUNDABOUT

WIDENING WORKS AT SPLITTER TO ACCOMMODATE ADDITIONAL THROUGH LANE

WIDENING WORKS AT TOWCESTER ROAD APPROACH TO RECTIFY VEHICLE OVERRUN

NEW FOOTWAY A MINIMUM OF 2m WIDE

DITCH REGRADED AND REDUCED IN LENGTH

WIDENING WORKS ON A43 NORTHBOUND DEPARTURE TO ACCOMMODATE 3 LANE EXIT FROM THE ROUNDABOUT

NEW SIGNAL CONTROLLED CROSSING

WIDENING WORKS AT TOWCESTER ROAD DEPARTURE

ALIGNMENT OF NEW FOOTWAY CONNECTING INTO UNCONTROLLED CARRIAGEWAY CROSSING

A43 NORTHBOUND APPROACH INCREASED TO 3 LANES

EARTHBUND REPROFILED TO ALLOW 2.5m VERGE AND INCREASED APPROACH VISIBILITY

FOOTWAY RECONSTRUCTED

HARDENED CENTRAL RESERVE

NEW STAGGERED CENTRAL RESERVE CROSSING

WIDENING WORKS ON A43 SOUTHBOUND APPROACH TO ACCOMMODATE 3 LANE APPROACH TO THE ROUNDABOUT

NEW SIGNAL CONTROLLED CROSSING POINT

WIDENING WORKS AT SPLITTER TO ACCOMMODATE ADDITIONAL THROUGH LANE

UNCONTROLLED CARRIAGEWAY CROSSING

WIDENING WORKS ON EXISTING SPLITTER TO ALLOW ADDITIONAL LANE AT DEPARTURE FROM ROUNDABOUT

EXISTING DITCH REGRADED

WIDENING WORKS ON A5 NORTHBOUND APPROACH TO ACCOMMODATE EXTENDED 2 LANE APPROACH TO THE ROUNDABOUT

NEW FOOTWAY A MINIMUM OF 2m WIDE CONNECTING INTO UNCONTROLLED CARRIAGEWAY CROSSING AT A5 STOP LINE AND A43 DEPARTURE

NEW UNCONTROLLED CARRIAGEWAY CROSSING WITH CENTRAL REFUGE ISLAND.

REPROFILED HARDENED CENTRAL RESERVE TO ACCOMMODATE NEW HORIZONTAL AND VERTICAL PROFILE.

EARTHBUND REPROFILED TO ALLOW 2.5m VERGE WITH NEW CARRIAGEWAY ALIGNMENT

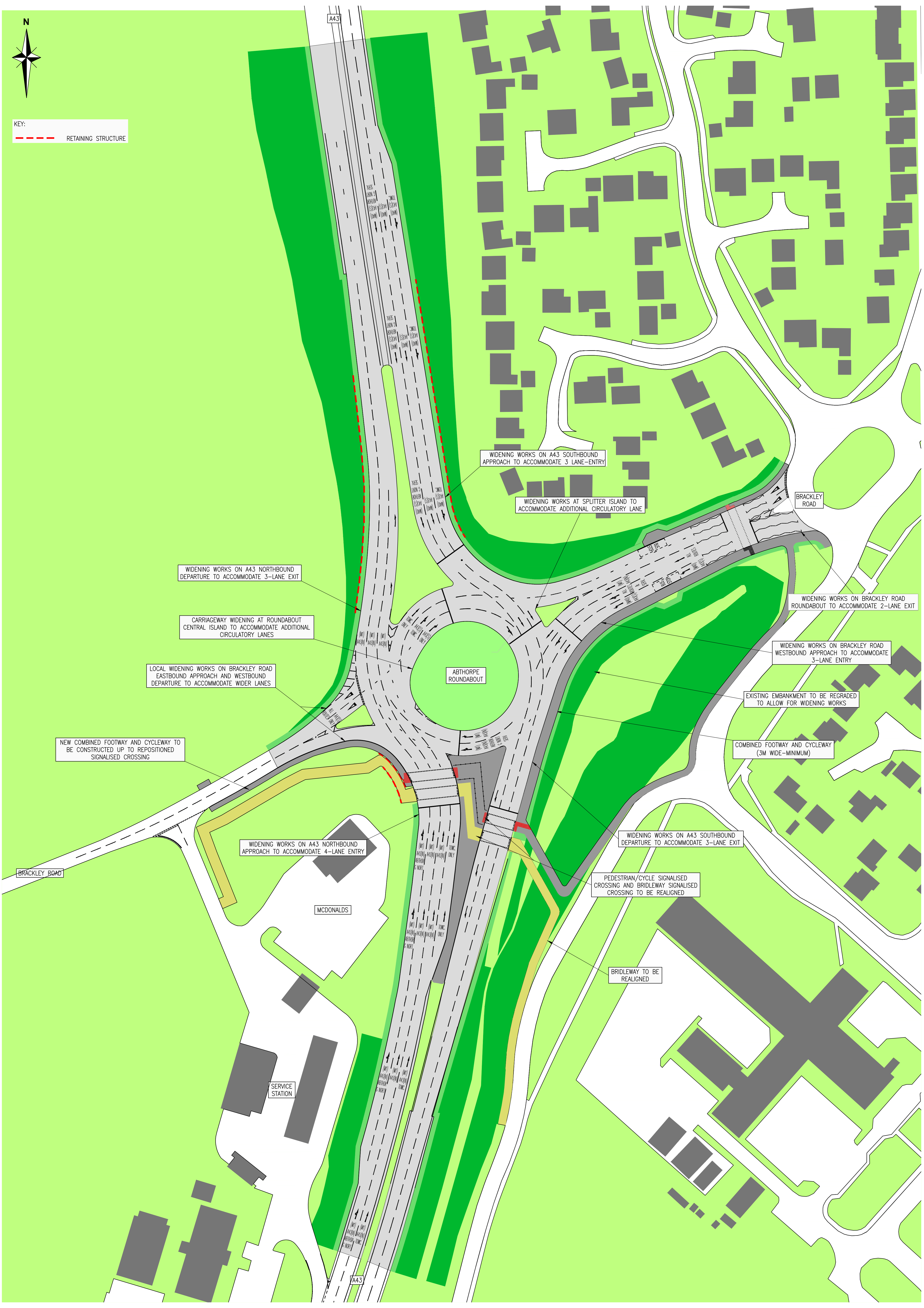
---

## Figure 19.4





KEY:  
- - - - - RETAINING STRUCTURE



WIDENING WORKS ON A43 NORTHBOUND DEPARTURE TO ACCOMMODATE 3-LANE EXIT

CARRIAGEWAY WIDENING AT ROUNDABOUT CENTRAL ISLAND TO ACCOMMODATE ADDITIONAL CIRCULATORY LANES

LOCAL WIDENING WORKS ON BRACKLEY ROAD EASTBOUND APPROACH AND WESTBOUND DEPARTURE TO ACCOMMODATE WIDER LANES

NEW COMBINED FOOTWAY AND CYCLEWAY TO BE CONSTRUCTED UP TO REPOSITIONED SIGNALISED CROSSING

WIDENING WORKS ON A43 NORTHBOUND APPROACH TO ACCOMMODATE 4-LANE ENTRY

MCDONALDS

SERVICE STATION

WIDENING WORKS ON A43 SOUTHBOUND APPROACH TO ACCOMMODATE 3 LANE-ENTRY

WIDENING WORKS AT SPLITTER ISLAND TO ACCOMMODATE ADDITIONAL CIRCULATORY LANE

BRACKLEY ROAD

WIDENING WORKS ON BRACKLEY ROAD ROUNDABOUT TO ACCOMMODATE 2-LANE EXIT

WIDENING WORKS ON BRACKLEY ROAD WESTBOUND APPROACH TO ACCOMMODATE 3-LANE ENTRY

EXISTING EMBANKMENT TO BE REGRADED TO ALLOW FOR WIDENING WORKS

COMBINED FOOTWAY AND CYCLEWAY (3M WIDE-MINIMUM)

WIDENING WORKS ON A43 SOUTHBOUND DEPARTURE TO ACCOMMODATE 3-LANE EXIT

PEDESTRIAN/CYCLE SIGNALISED CROSSING AND BRIDLEWAY SIGNALISED CROSSING TO BE REALIGNED

BRIDLEWAY TO BE REALIGNED

ABTHORPE ROUNDABOUT

A43

A43

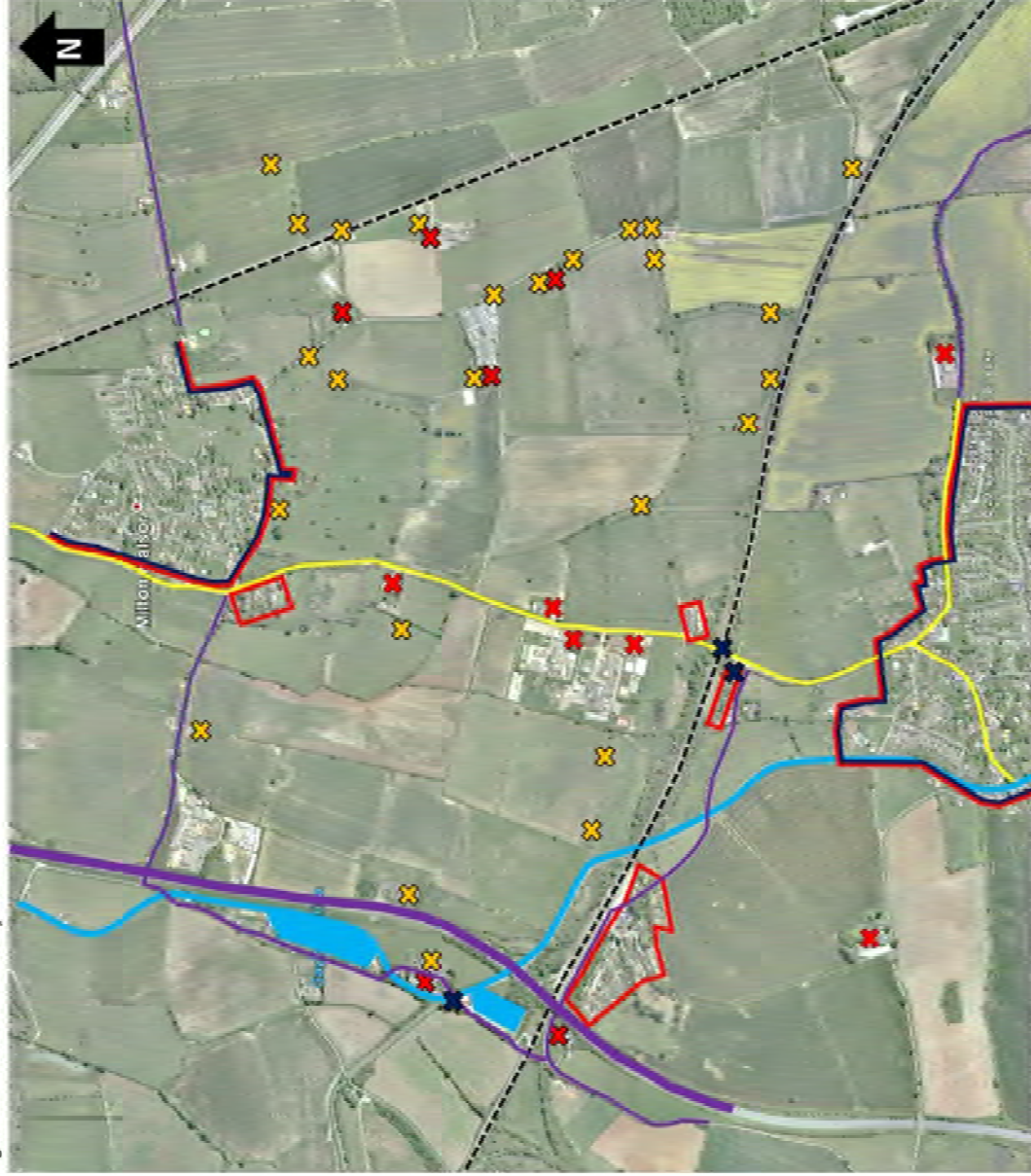
BRACKLEY ROAD

---

**Figure 22.1**



Figure 22.1 - Overview of Study Area



- Receptor - Residential
- Receptor - Residential Zone
- Receptor - Heritage
- Receptor - Heritage cluster
- Receptor - Ecology
- Receptor - Lit Highway
- Receptor - Unlit Highway
- Receptor - Waterbody
- Receptor - Railway

Location of Sensitive receptors within Study Area

Not to Scale  
 © Cynegle 2016  
 Background Image date: 24 May 2009



---

## Figure 22.2

Figure 22.2 - Overview of Site location



Daytime panorama 15:25pm (Image: Hoare Lea 16-02403 - RAIL CENTRAL IMG-2016-04-12.D)



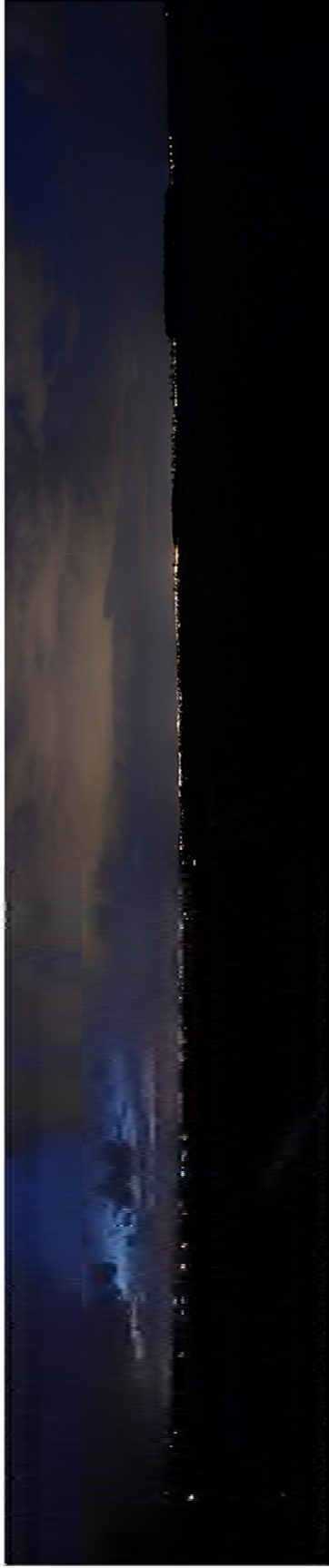
View from Milton Crossing Foot Bridge  
12 April 2016  
GRD REF-SP 73979 53703  
Latitude: 52.176639 Longitude: -0.91956384  
Not to Scale  
© Google 2016  
Background image date: 24 May 2009

---

## Figure 22.3



Figure 22.1 - Overview of Site location



Night time panorama 21:05pm (Image: Hoare Lea 16-02403 - RAIL CENTRAL IMG-2016-04-12 N)



View from Milton Crossing Foot Bridge  
12 April 2016  
GRID REF-SP 73979 53763  
Latitude: 52.176639 Longitude: -0.91956384  
Not to Scale  
© Google 2016  
Background image date: 24 May 2009

---

## Figure 22.4

**Figure 22.4 – Preliminary Operational External Lighting Parameters (to be confirmed)**

**Pedestrian Routes**  
 BS EN 13201-2:2003  
 BS 5489-1:2013  
 P4 / S4 Classification  
 S/P ratio = 1.2 and Ra ≥ 60  
 Average maintained illuminance 4.0 lux / Minimum 0.8 lux  
 Generic Luminares: 5 to 6m column mounted 4000K LED luminaire

**Car Parking**  
 BS 5489-1:2013  
 BS EN 12464-2:2014 Outdoor Work spaces  
 Medium traffic, e.g. parking areas of department stores, office buildings, plants, sports and multipurpose  
 Building complexes.  
 10 Lux/0.25 Uniformity  
 Generic Luminares: 5 to 6m column mounted 4000K LED luminaire

**Lorry Parking**  
 BS 5489-1:2013  
 BS EN 12464-2:2014 Outdoor Work spaces  
 Medium traffic, e.g. parking areas of department stores, office buildings, plants, sports and multipurpose  
 Building complexes.  
 10 Lux/0.25 Uniformity  
 Generic Luminares: 8 to 10m column mounted 4000K LED luminaire

**Carriageway - S3 (being comparable to the existing roadway lighting within the Site)**  
 BS EN 13201-2:2003  
 BS 5489-1:2013  
 S/P ratio = 1.2 and Ra ≥ 60  
 Average maintained illuminance 6.3 lux / Minimum 1.3 lux  
 Generic Luminares: 8 to 10m column mounted 4000K LED luminaire

**Carriageway – MEAa Classification (being comparable to the existing roadway lighting within the Site)**  
 BS EN 13201-2:2003  
 BS 5489-1:2013  
 Luminance 0.75 cd/m<sup>2</sup> 0.40 uniformity  
 Generic Luminares: 8 to 10m column mounted 4000K LED luminaire

**Roundsabout - CE3 Classification**  
 BS EN 13201-2:2003  
 BS 5489-1:2013  
 15 lux/0.4 Uniformity  
 Generic Luminares: 10m column mounted 4000K LED luminaire

**Service Yards**  
 BS EN 12464-2:2014  
 20 lux/0.25 Uniformity  
 Generic Luminares: 8 to 10m building / column mounted 4000K LED luminaire providing ambient illumination

**Loading / Unloading Bays**  
 BS EN 12464-2:2014  
 50 lux/0.40 Uniformity  
 Generic Luminares: 8 to 10m building / column mounted 4000K LED luminaire providing ambient illumination,

**Checkpoints**  
 CIBSE SLL Lighting Guide 1 – Industrial Environment  
 150 lux/0.40 uniformity  
 Generic Luminares: 8 to 10m column mounted 4000K LED luminaire

**Barriers**  
 BS 5489-1:2013  
 BS EN 13201-2: 2003 – Road lighting – Part 2: Performance requirements  
 CE4 – 10 Lux/0.4 uniformity  
 Generic Luminares: 8 to 10m column mounted 4000K LED luminaire

**Layby**  
 BS 5489-1:2013  
 BS EN 13201-2: 2003 – Road lighting – Part 2: Performance requirements  
 CE3 – 15 Lux/0.4 uniformity  
 Generic Luminares: 8 to 10m column mounted 4000K LED luminaire

**Wheelwash**  
 BS 5489-1:2013  
 BS EN 13201-2: 2003 – Road lighting – Part 2: Performance requirements  
 CE3 – 15 Lux/0.4 uniformity  
 Generic Luminares: 8 to 10m column mounted 4000K LED luminaire

**Weightbridge**  
 BS 5489-1:2013  
 BS EN 13201-2: 2003 – Road lighting – Part 2: Performance requirements  
 CE3 – 15 Lux/0.4 uniformity  
 Generic Luminares: 8 to 10m column mounted 4000K LED luminaire

**Express Freight – Cross Dock platform**  
 BS EN 12464-2:2014  
 CIBSE SLL Lighting Guide 1 – Industrial Environment  
 Continuous handling of large units and raw materials, loading and unloading of freight, lifting and descending location for cranes, open loading platforms  
 50 lux/0.40 Uniformity  
 Generic Luminares: 10 to 12m Column mounted 4000K LED luminaire providing ambient illumination

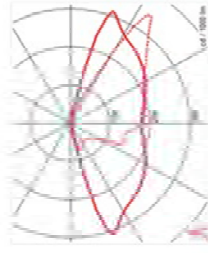
**Intermodal Terminal**  
 BS EN 12464-2:2014  
 CIBSE SLL Lighting Guide 1 – Industrial Environment  
 Continuous handling of large units and raw materials, loading and unloading of freight, lifting and descending location for cranes, open loading platforms  
 50 lux/0.40 Uniformity  
 Generic Luminares: 12m (min.) column mounted 4000K LED luminaire providing ambient illumination, localised task lighting as required e.g. intermodal cranes



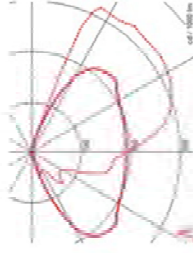
Generic column mounted LED luminaire



Generic building / column mounted LED luminaire



Typical polar curve for roadway distribution  
 Zero direct uplight



Typical polar curve for asymmetric distribution  
 Zero direct uplight



## More information

For further information please visit:  
[www.railcentral.com](http://www.railcentral.com)

You can also e-mail us via [railcentral@camargue.uk](mailto:railcentral@camargue.uk)  
or telephone our information line (Monday to Friday,  
9am to 5.30pm) on 0845 543 8967 (please note calls  
are charged at local rates).

There is further information on the planning process  
on the National Infrastructure Planning website at:  
[www.infrastructure.planninginspectorate.gov.uk](http://www.infrastructure.planninginspectorate.gov.uk)

April 2016