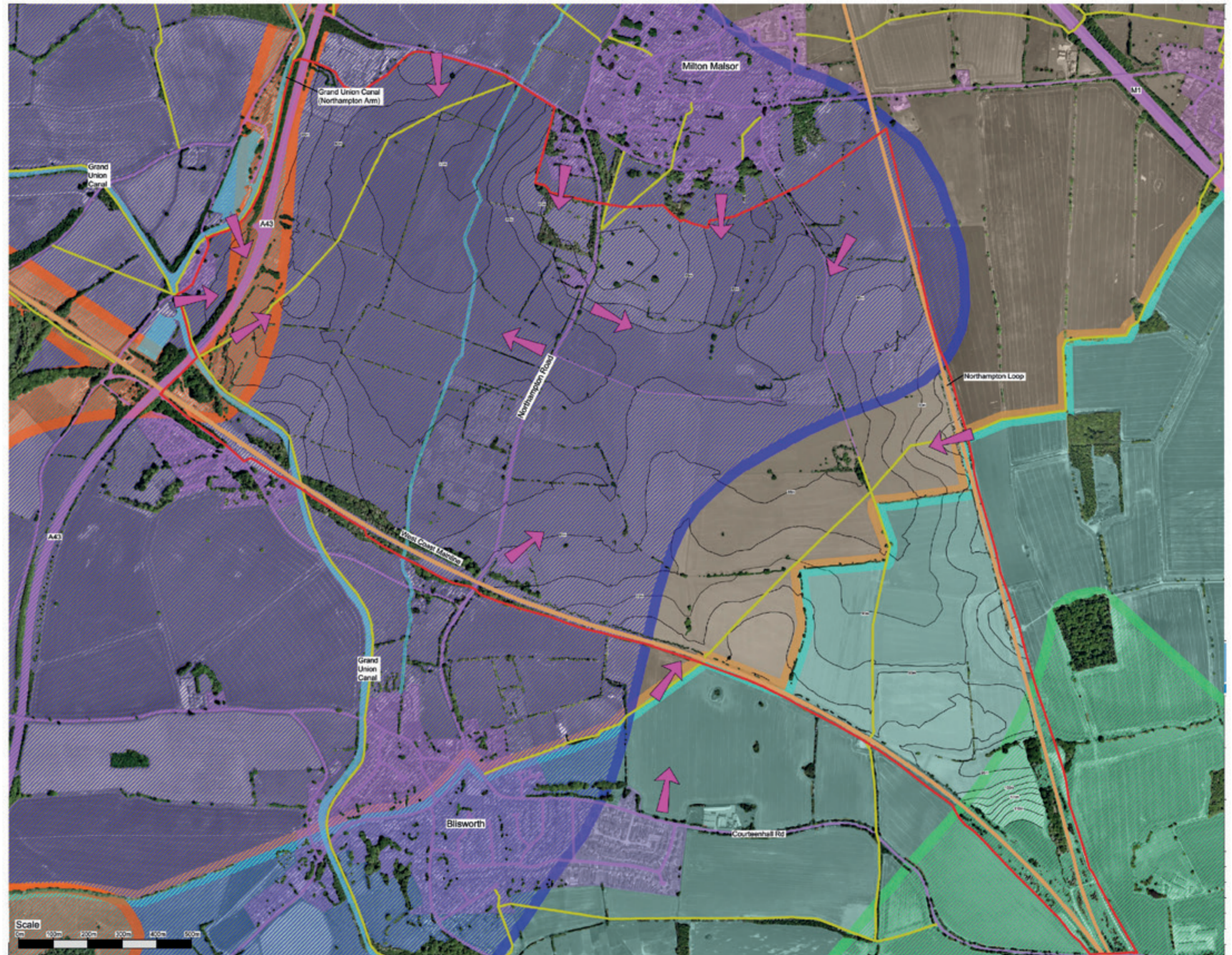


Rail Central: Draft plans for community consultation



April 2016

Key constraints and opportunities plan





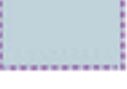




Key

Strategic Biodiversity Network Woodland Habitat Reservoir	Road	Public Right of Way	Existing Vegetation	Local Character Area 6A Undulating Claylands - The Tove Catchment
Strategic Biodiversity Network Neutral Grassland Habitat Reservoir	Settlement	Railway Line	2.5m Contour Lines	Key View in Towards Application Site
Strategic Biodiversity Network Calcareous Grassland Habitat Reservoir	Watercourse	Application Boundary	Local Character Area 13B Undulating Fields and Valleys Bugbrooke and Daventry	



Parameters plan

LEGEND

-  INFRASTRUCTURE LANDSCAPING
-  SOFT LANDSCAPING
-  FLOOD ATTENUATION
-  DEVELOPMENT PLATEAU
-  INTERMODAL AREA
-  MAIN VEHICULAR ACCESS
-  MILTON MALSOR BROOK
-  MILTON MALSOR BROOK DIVERTED
-  NEW ROAD INFRASTRUCTURE



Draft illustrative masterplan

KEY

- 1 NEW A43 INTERCHANGE
- 2 FLOOD ATTENUATION
- 3 DIVERTED WATERCOURSE
- 4 LANDSCAPED BUNDS
- 5 STORAGE AND DISTRIBUTION WAREHOUSE
- 6 RAIL SERVED STORAGE AND DISTRIBUTION WAREHOUSE
- 7 RAIL MAINTENANCE DEPOT
- 8 EXPRESS FREIGHT PLATFORM
- 9 ACCESS ROAD UNDERPASS
- 10 LANDSCAPE SCREENS
- 11 LORRY PARK
- 12 DEVELOPMENT WEST OF A43

Draft illustrative masterplan





More information

Please note these plans are draft for consultation and indicative. They are subject to change.

For further information please visit: www.railcentral.com

You can also e-mail us via railcentral@camargue.uk or telephone our information line (Monday to Friday, 9am to 5.30pm) on 0845 543 8967 (please note calls are charged at local rates).

There is further information on the planning process on the National Infrastructure Planning website at: www.infrastructure.planninginspectorate.gov.uk