

The logo features the words "Rail Central" in a large, white, sans-serif font. A stylized white circle, representing a train wheel, is positioned between the two words. A horizontal line of white vertical bars, resembling a railway track, passes through the center of the circle. A vertical line of white horizontal bars, also resembling a railway track, passes through the center of the circle. The entire design is set against a solid orange background.

# Rail Central

Northamptonshire

# Introduction

- We're about to start Phase Two consultation
- We want to brief you on what's involved and how you can participate
- We've done a lot more technical work since we last met
- We've formed a partnership with Gazeley

# Phase Two consultation

- Runs from 15 March to 23 April 2018
- Includes the local community (S47) and all other prescribed stakeholders (i.e. landowners, local authorities, utilities etc)
- Defined by an updated Statement of Community Consultation (SoCC)
- Building on Phase One consultation – the scheme has evolved in line with technical studies and consultation feedback

## Rail Central: Community update

Spring 2018



### Phase Two statutory consultation to begin on 15 March

This community update focuses on the upcoming Phase Two consultation which is scheduled to run from **15 March to 23 April 2018**.

In this newsletter, you can find out more about the consultation as well as how to take part and provide feedback.

We also cover more details on the development of our proposals and how, subject to planning, Rail Central could be delivered.



### Project overview – what is Rail Central?

Rail Central is a proposed Nationally Significant Infrastructure Project (NSIP) that responds to market demand and Government policy for the creation of a strategic network of new rail freight interchanges (which is set out in the National Policy Statement for National Networks, NPSNN).

Rail Central would be a major new logistics and distribution hub with direct rail connections to the West Coast Main Line and Northampton Loop Line alongside road access to the A43 and M1, with approximately 7.4m sq ft of rail-connected and rail-served commercial space. Considered as an NSIP under the Planning Act 2008, it will be submitted to

and examined by the Planning Inspectorate (PINs) and ultimately determined by the Government.

The plans also include highway improvements, with a major upgrade to J15A. There are significant improvements proposed for J15A and as such it will be considered as an NSIP separate to the main site.

### Where we are now and consultation to date

We have been promoting the opportunity for Rail Central since late 2015 and published our first leaflet introducing Rail Central in January 2016.

From April to September 2016, we held our Phase One statutory consultation. This included presenting details of our emerging proposals and various technical and environmental information – and we asked for feedback from the local community and other consultees.

We held eight public exhibitions in locations near the site including Milton Malsor, Blisworth, Roade, Collingtree and Towcester. Following this period of consultation, we assessed all of the feedback, developed more detail on technical assessments and surveys, and continued to refine our proposals.

Feeding into the overall design and development process, we have continued talking to stakeholders on an informal basis, held meetings to progress our technical work, and kept people informed via our website, updates with the Local Liaison Group (LLG) and direct correspondence.

We are now getting ready for our Phase Two consultation.

We have undertaken extensive technical work to ensure that we have a detailed and robust set of information on which to consult at Phase Two. This includes ground surveys, environmental and ecological assessments, rail engineering, highways surveys, archaeology and more.

We have invested considerable time to complete these surveys to ensure we have comprehensive information for the Preliminary Environmental Information (PEI), which explains our approach to assessing the environmental effects of the project and will form a major part of our application.

We have joined with a delivery partner, Gazeley, to ensure that we realise the full potential and benefits of Rail Central. Further details on this can be found overleaf.

# Phase Two consultation material

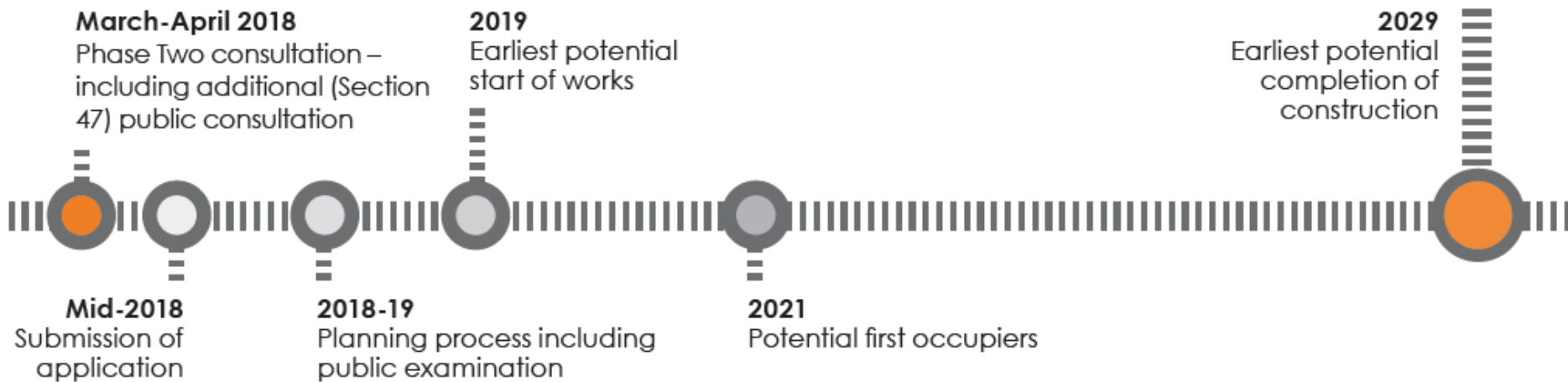
- Consulting on Preliminary Environmental Information (PEIR)
- Suite of documents – from Design & Access to Socio-economic
- Non-technical summary
- Parameters Plan
- Illustrative masterplan
- CGIs and 3D model to help visualise the scheme

# Phase Two public exhibitions

The dates for the exhibitions are:

Venue	Address	Date	Time
Walnut Tree Inn	21 Station Rd, Blisworth NN7 3DS	Thursday 15 March	2pm – 8pm
Milton Malsor Village Hall	High Street, Milton Malsor NN7 3AS	Saturday 17 March	12.30pm – 5.30pm
Roade Village Hall	Bailey Brooks Lane, Roade NN7 2LS	Wednesday 21 March	1pm – 7pm
South Northamptonshire Council Chamber	The Forum, Moat Lane, Towcester NN12 6AD	Thursday 22 March	1pm – 7pm
Milton Malsor Village Hall	High Street, Milton Malsor NN7 3AS	Friday 23 March	2pm – 8pm
Blisworth Village Hall	19 Stoke Road, Blisworth NN7 3DB	Saturday 24 March	10am – 4pm

# Timetable





# Scheme update

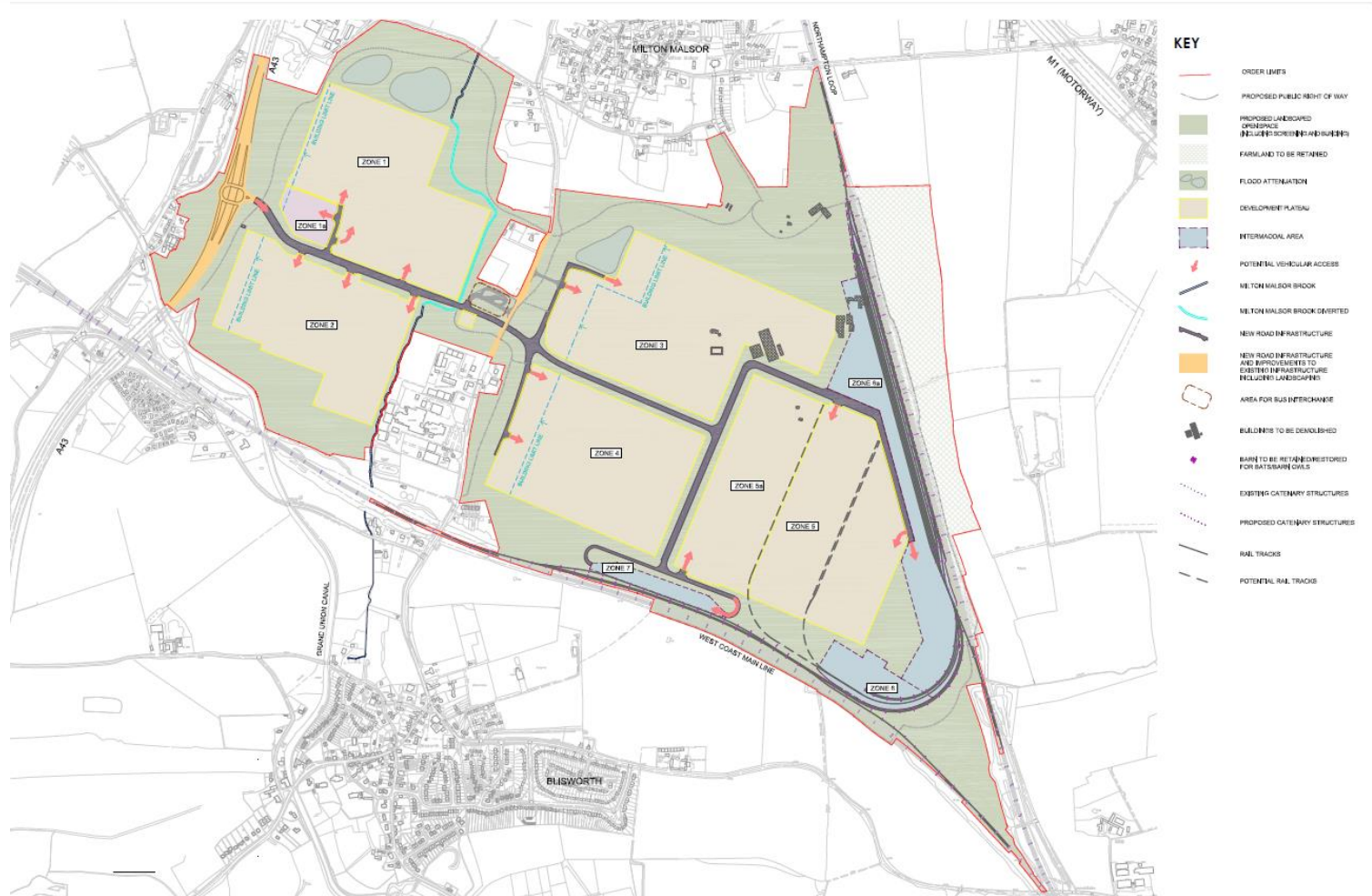




# Technical work and surveys

- Completed wide-ranging site surveys and assessments
- Engaged with statutory organisations including Environment Agency, Natural England, Canal & River Trust etc
- Linked design development to evidence base
- Following Environmental Impact Assessment Regulations 2017

# Parameters Plan



# Illustrative Masterplan





# Rail connectivity



# Integrating and connecting

- *Focus has been to confirm **compliance with NPS**:*
  - *Operational rail connection and intermodal area from the start*
  - *Able to handle at least 4 trains per day, each up to 775m long*
  - *Able to accept trains from the main line in each direction*
  - *Able to handle trains to at least W8 gauge (main lines are W10)*
- *Working with **Network Rail (NR)** as rail system operator:*
  - *Pre-screening of SRFI proposals by Network Rail internal panels*
  - *Technical workstreams to stage 2 of NR's 8-stage "GRIP" process*
  - *Report on work to date to be submitted with DCO application*
- *To reiterate, the **system operator** (not Rail Central) will manage the scheduling of trains on and off the main line, to avoid disruption to other passenger and freight services*



# Highways modelling and design



# Access & Highways

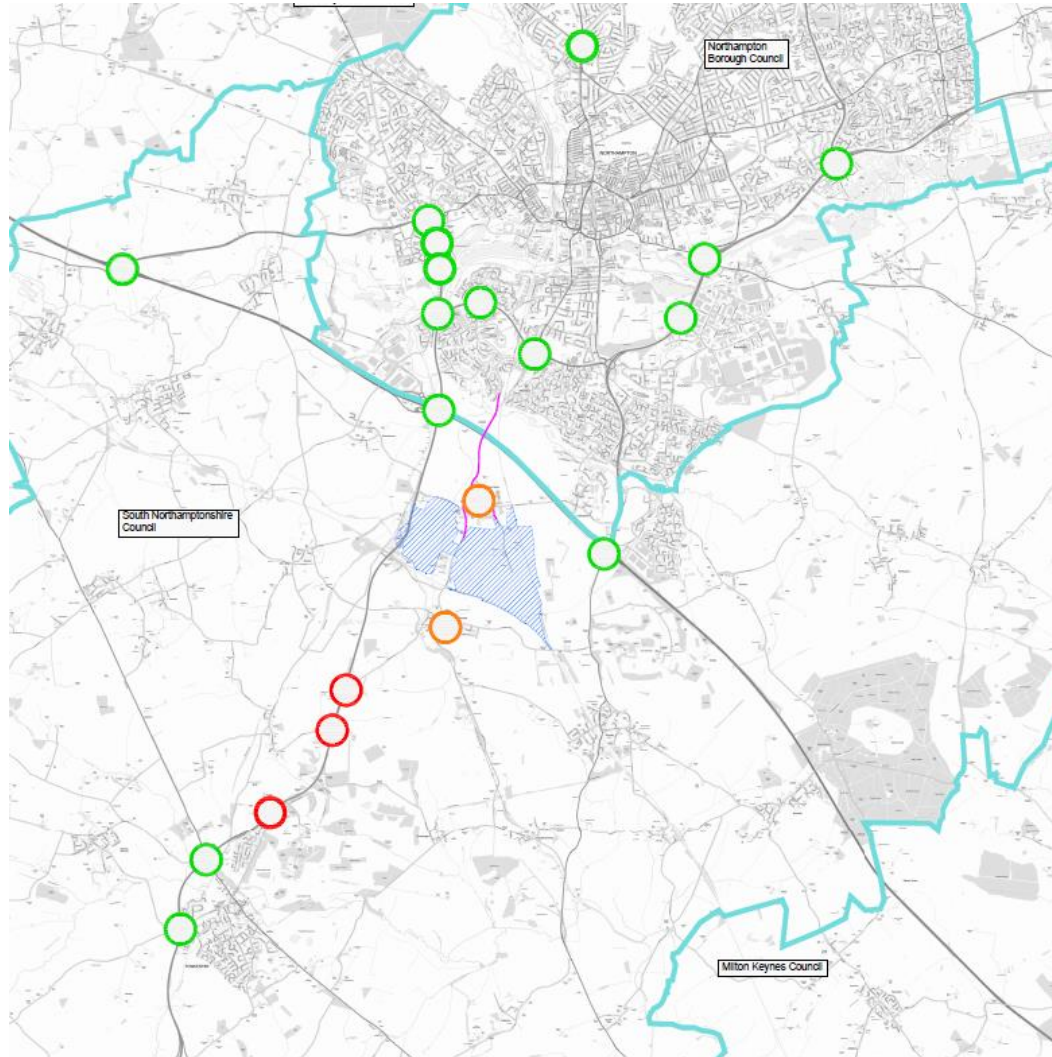
- Designs informed by new Northamptonshire County highways model
- Proposals developed in discussion with Highways England
- Vehicle access is key to site operation alongside rail – the logistics industry depends on speed and certainty of delivery
- Data and technical information contained within the consultation material – for those who want the detail
- Package of junction improvements including M1 J15A and more widely



# Access & Highways



# Access & Highways



## KEY

-  Approximate Site Boundary
-  Mitigated Junction - Capacity Schemes
-  Mitigated Junction - Safety Schemes
-  Approximate District Boundaries
-  Potential Environmental Enhancement Scheme
-  Proposed Pedestrian/Cycle Improvements





**Gazeley**  
a GLP  company

**Delivery  
partner**

J  
D  
N  
U  
6

70

# Introducing Gazeley

- Leading and long-established logistics specialist
- Operating across the UK and Europe
- Magna Park developments
- Part of GLP, the leading global logistics business
- Partnering with Ashfield Land
- Bringing development and operational expertise



**Thank you**  
**Any questions?**

J  
D  
N  
U  
6

IC  
70

The logo features the text "Rail Central" in a large, white, sans-serif font. The letter "O" in "Central" is replaced by a large white circle. A horizontal and a vertical dashed white line intersect at the center of this circle. The word "Northamptonshire" is written in a smaller, white, sans-serif font below the main text, positioned to the right of the central circle.

# Rail Central

Northamptonshire



# The proposals

J15A

M1

A43

**West Coast Main Line  
(Northampton Loop)**

**West Coast Main Line  
(Fast Lines)**

